

Program EVALPLOT  
(Version 2021-1)

by

Dermott E. Cullen  
(Present Contact Information)

Dermott E. Cullen  
1466 Hudson Way  
Livermore, CA 94550  
U.S.A.

Tele: 925-443-1911

E.Mail: [redcullen1@comcast.net](mailto:redcullen1@comcast.net)

Web: [redcullen1.net/HOMEPAGE.NEW](http://redcullen1.net/HOMEPAGE.NEW)

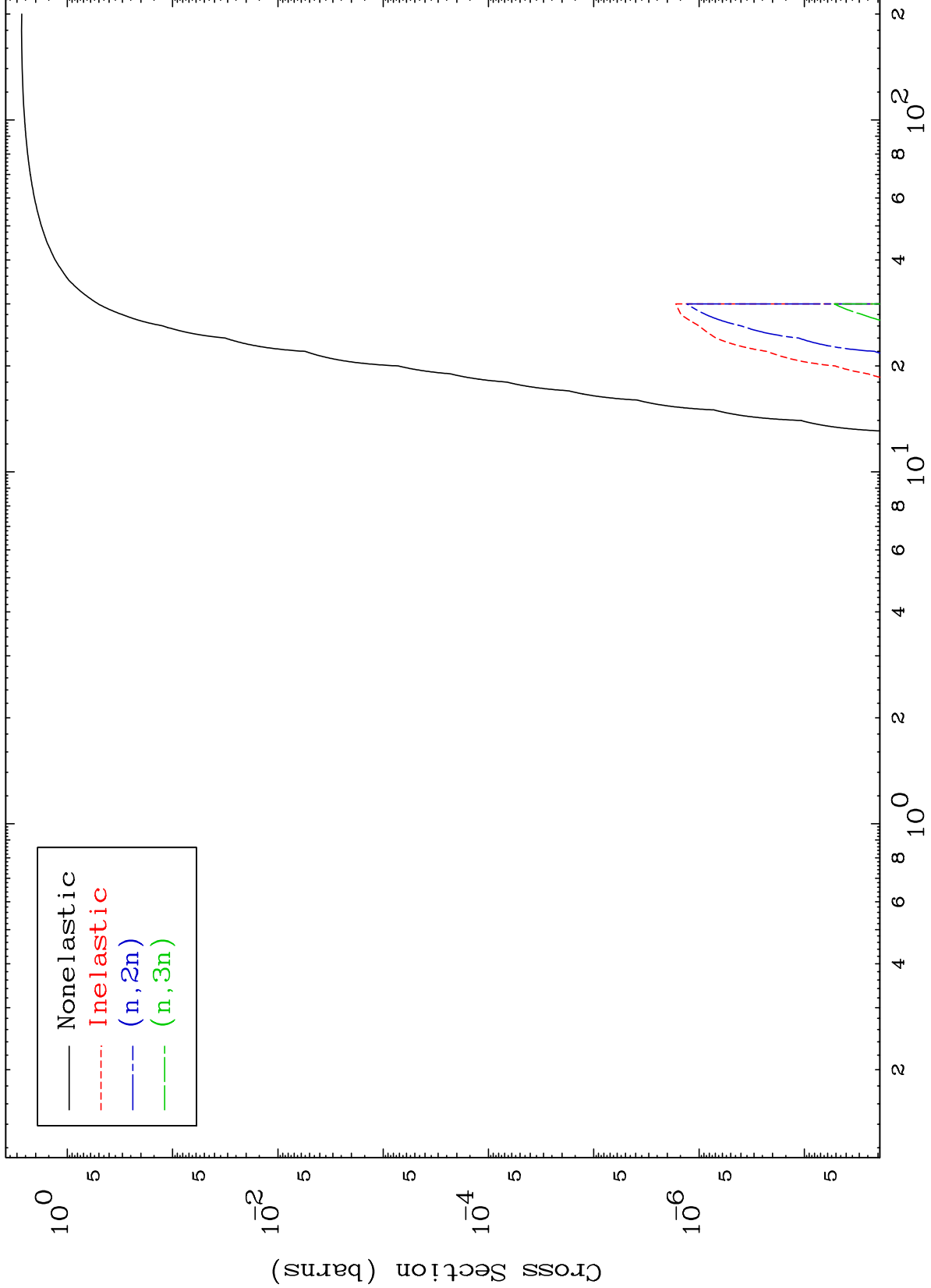
Press Mouse Button to Start

MAT 569

He-3 Major

105-Db-269

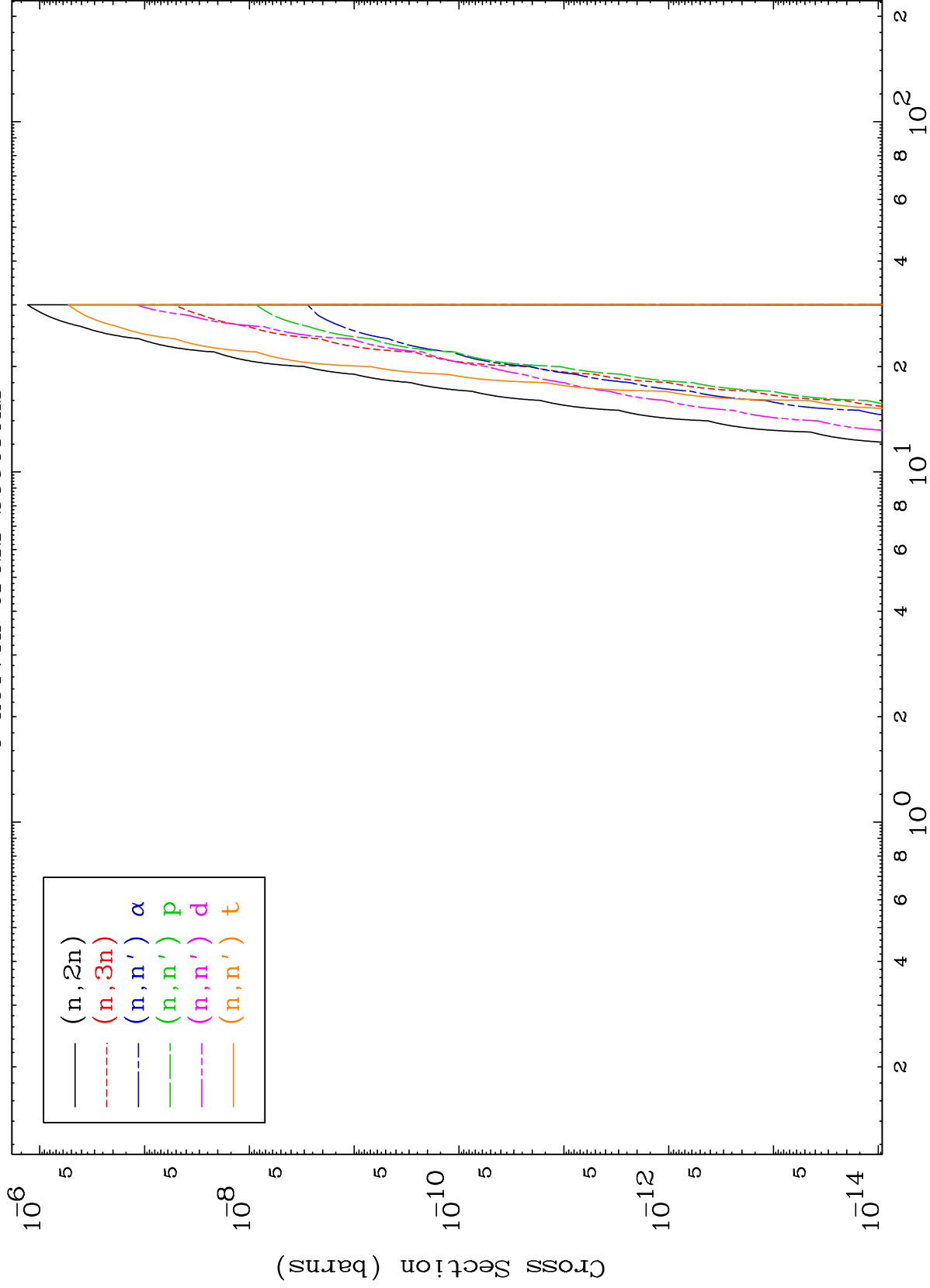
0 Kelvin Cross Sections

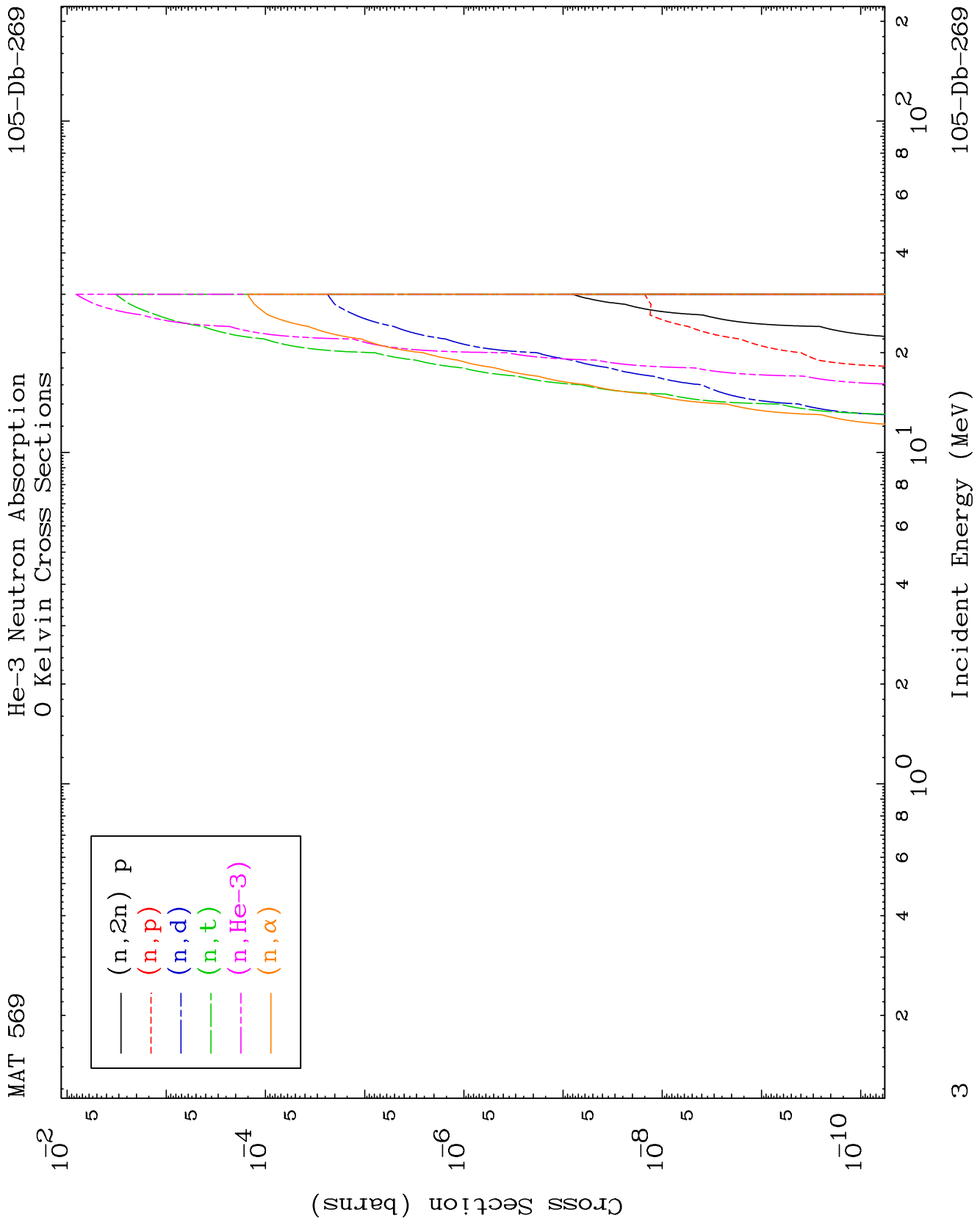


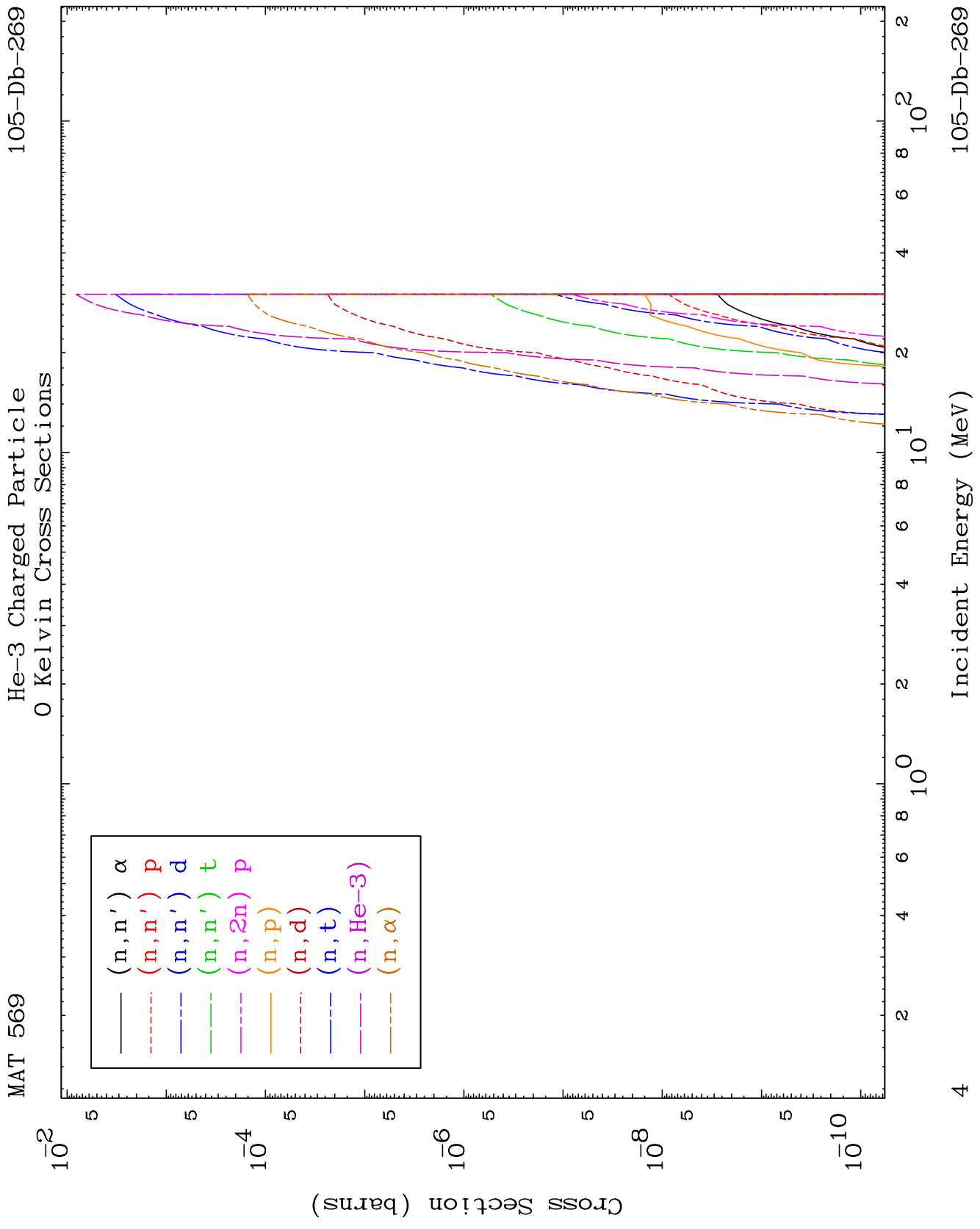
MAT 569

He-3 Neutron Absorption  
0 Kelvin Cross Sections

105-Db-269



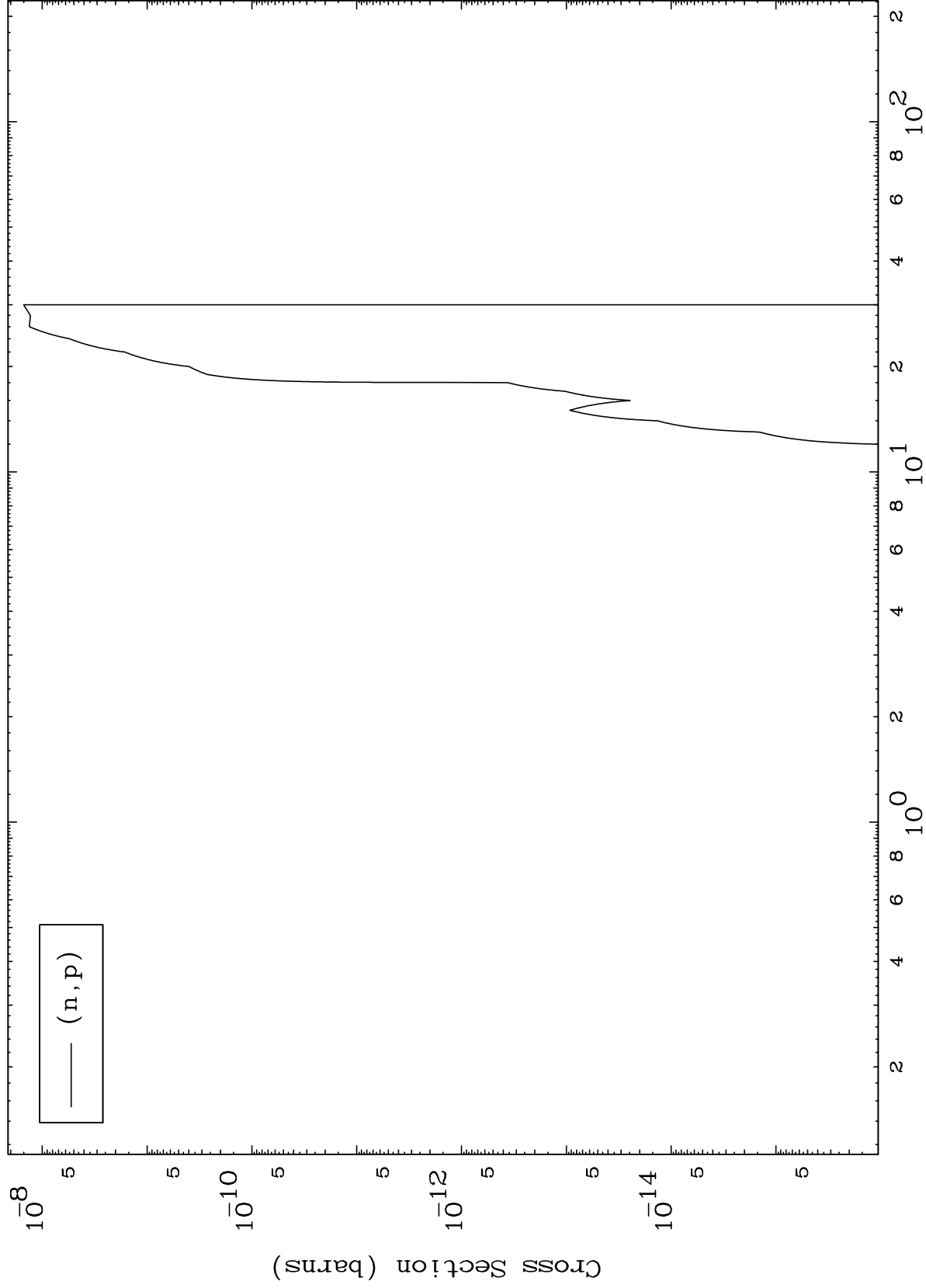




MAT 569

(He-3,p) Levels  
0 Kelvin Cross Sections

105-Db-269



5

Incident Energy (MeV)

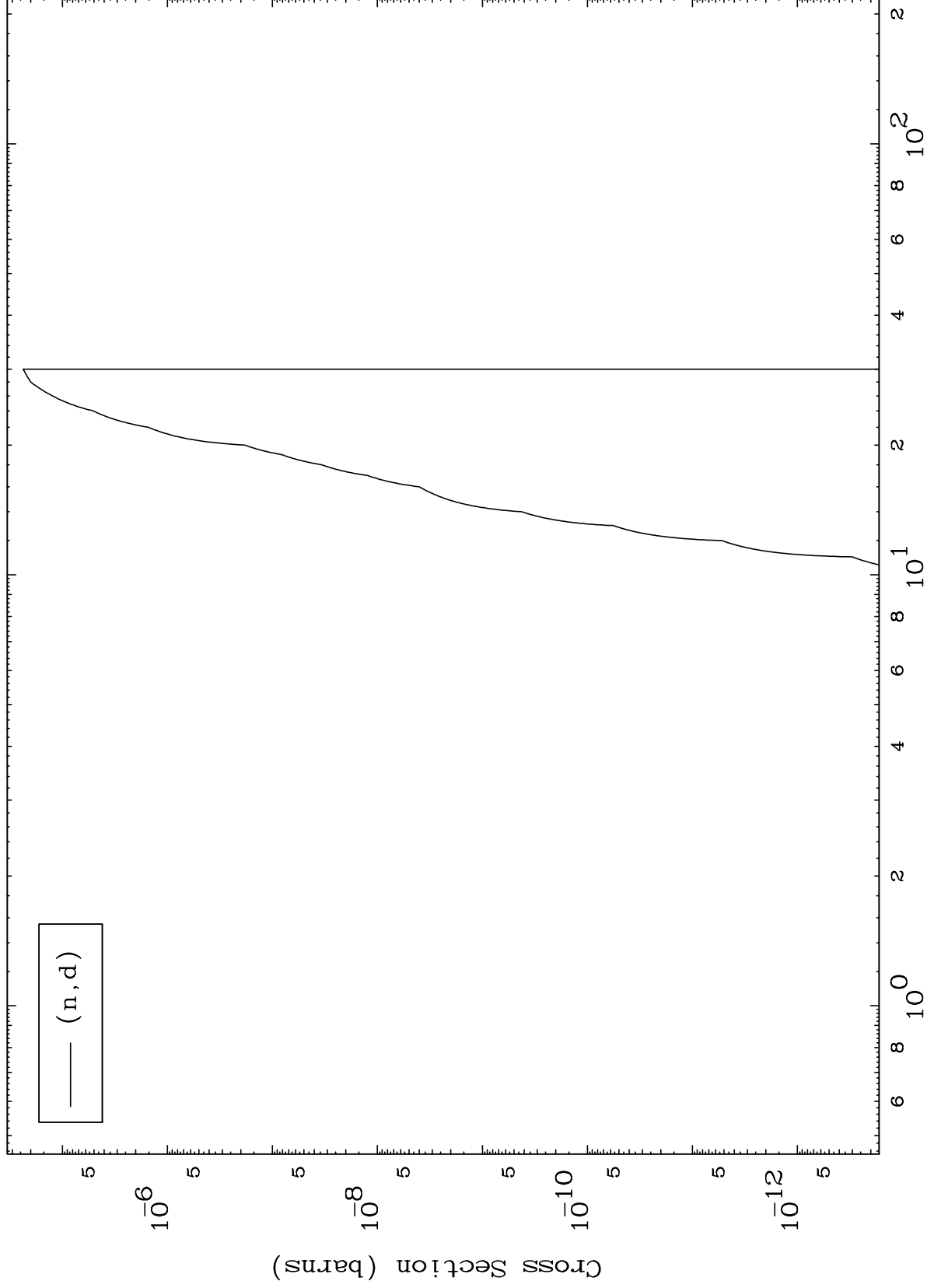
105-Db-269

MAT 569

(He-3,d) Levels

105-Db-269

0 Kelvin Cross Sections



6

Incident Energy (MeV)

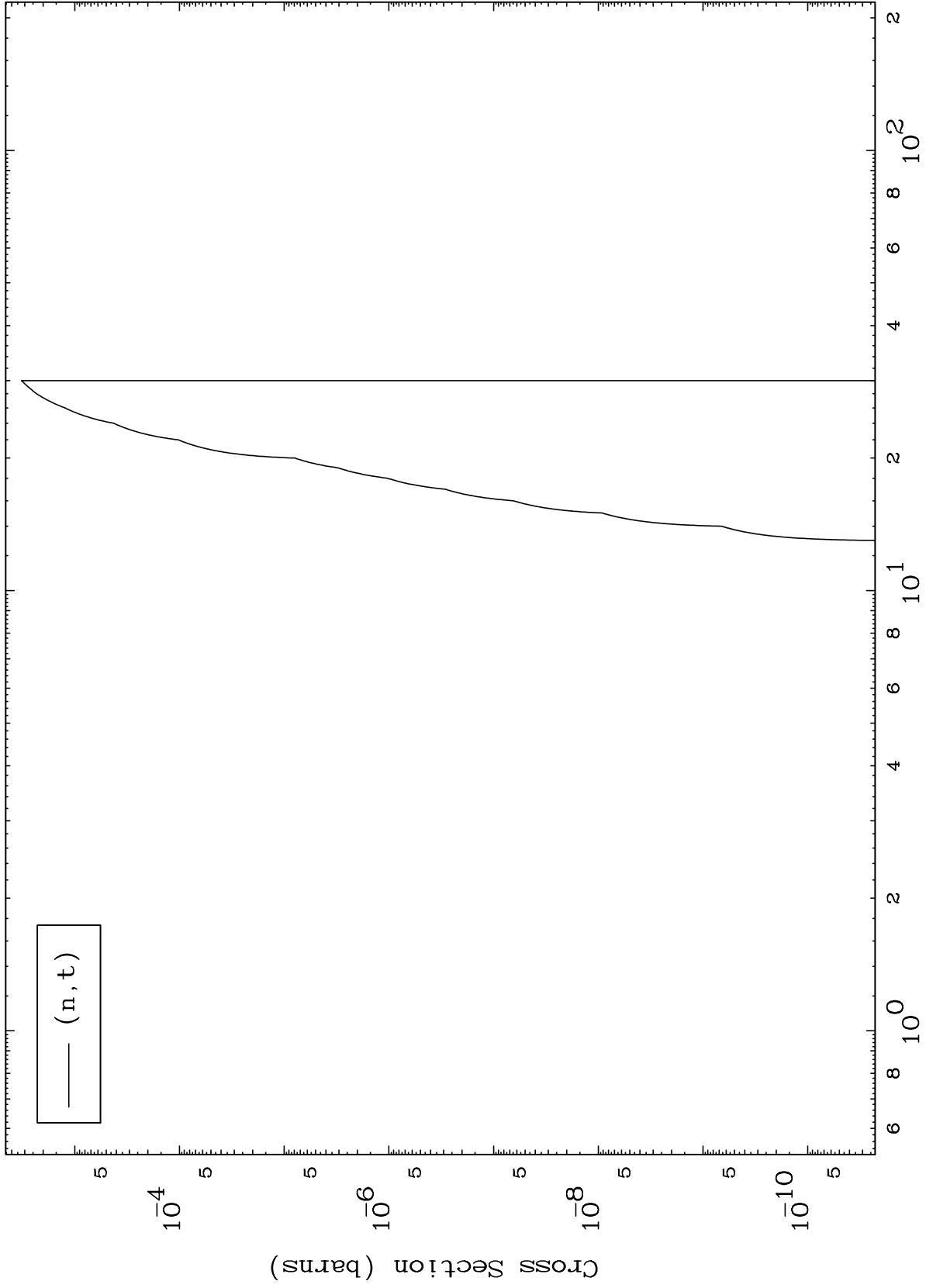
105-Db-269

MAT 569

(He-3,t) Levels

105-Db-269

0 Kelvin Cross Sections



7

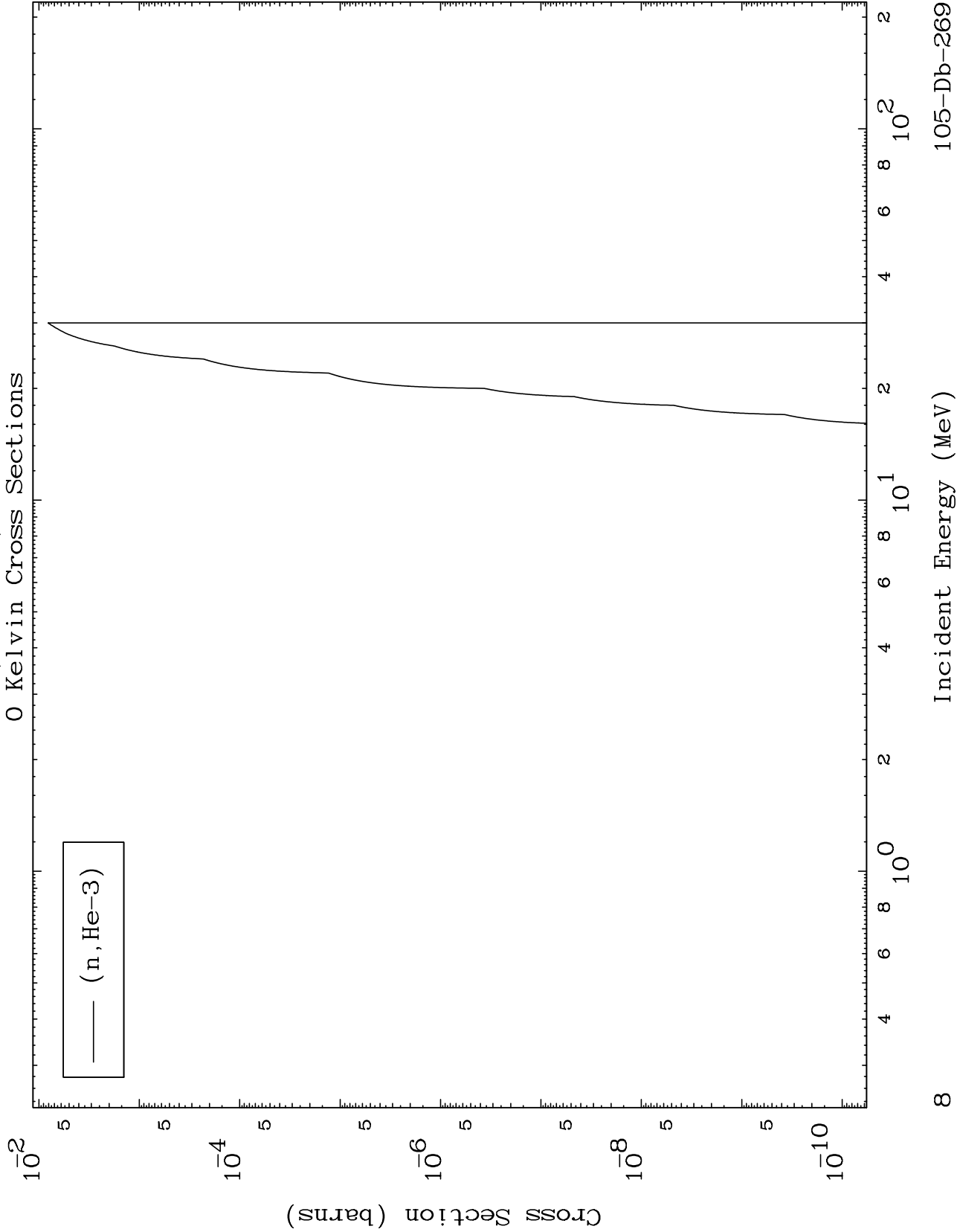
Incident Energy (MeV)

105-Db-269

MAT 569

(He-3, He3) Levels

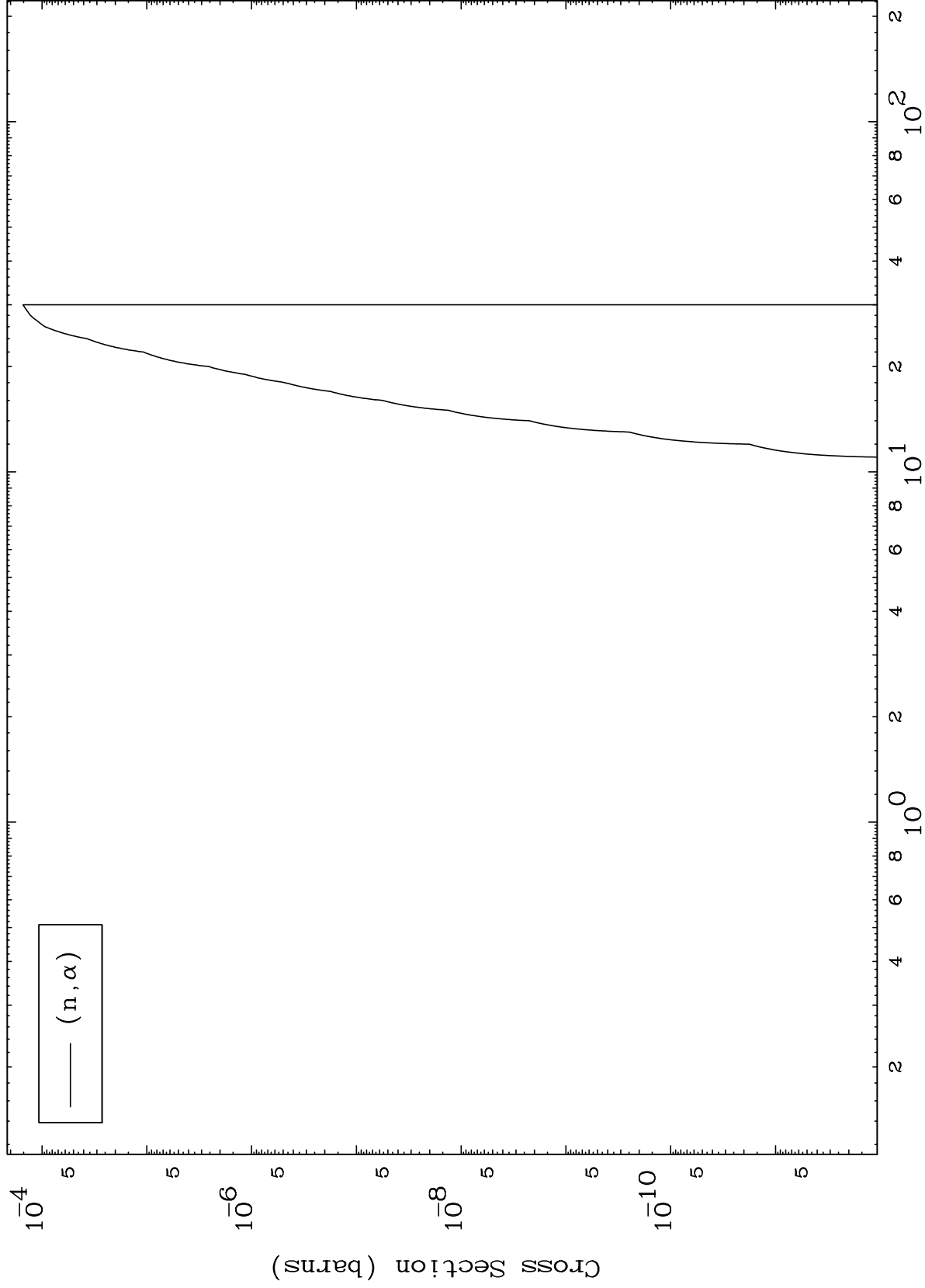
105-Db-269



MAT 569

105-Db-269

(He-3,  $\alpha$ ) Levels  
0 Kelvin Cross Sections

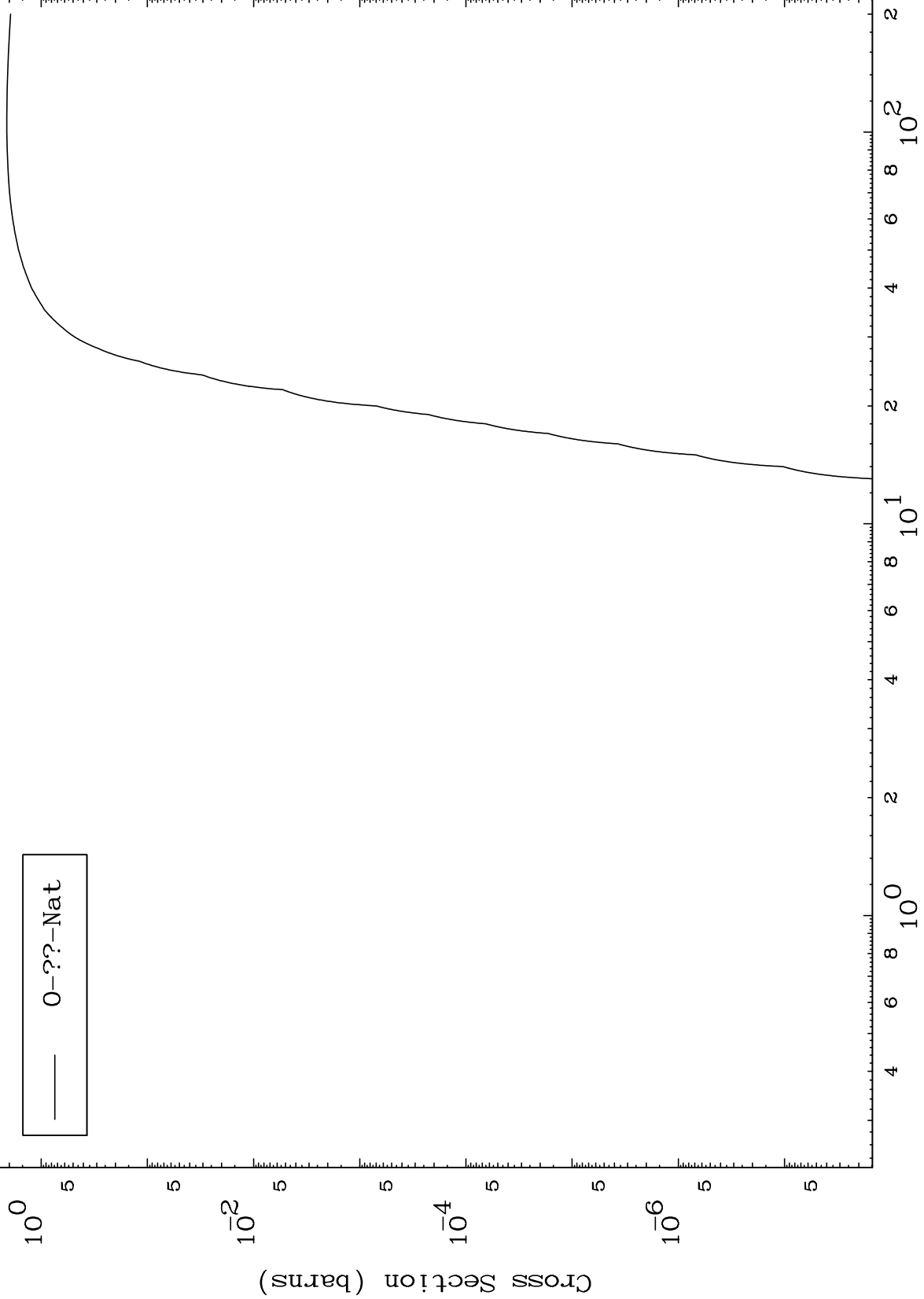


MAT 569

Fission

105-Db-269

Radionuclide Production Cross Section



— 0-??-Nat

10

Incident Energy (MeV)

105-Db-269